



ARCADIA REPTILE



PRODUCT DATA SHEET

CPSMIN8

PURESUN-MINI

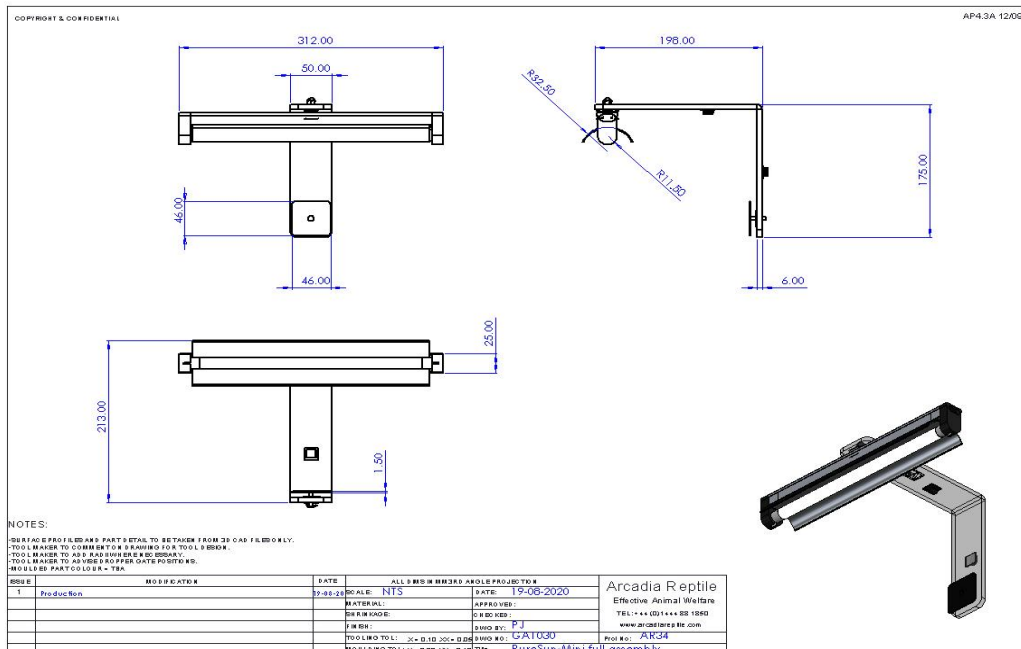



GENERAL DESCRIPTION - a version of the Arcadia ProT5 luminaire supplied with a bracket for cage mounting. The luminaire has an extruded aluminium body with plastic end caps with a clip on reflector. The luminaire is supplied with a 8W Bird lamp fluorescent tube. Mains lead, link lead and an acrylic mounting bracket are also supplied.

SPECIAL PRECAUTIONS

These tubes have a high light output, do not look directly at the tube when it is lit. Fluorescent tubes contain small amounts of mercury which would could be released if a tube is broken. The amount of mercury released would not be enough to pose a health risk to anyone immediately exposed but as a precautionary measure any room in which a tube breaks should be aired for 15 minutes. Do not use a vacuum cleaner or brush to remove debris as this risks further contamination. Wear disposable gloves. Carefully scoop up the larger bits of glass with a disposable piece of cardboard or similar. Use a piece of duct tape to pick up small pieces of glass and powder. Clean area with a paper towel. Seal all materials and cleaning equipment in a robust container and treat as hazardous waste. Thoroughly wash hands with soap and water. Dispose of in line with WEEE regulations.

LUMINAIRE DIMENSIONS

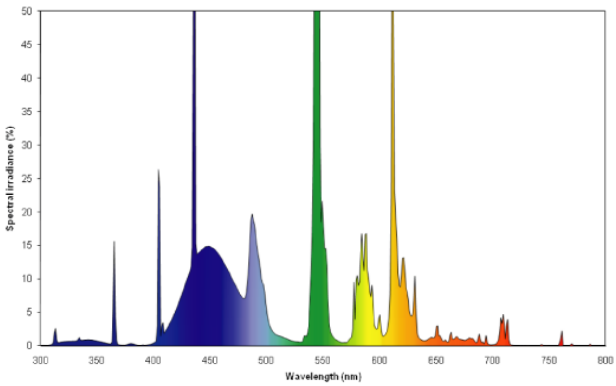






 Monkfield Reptile	ARCADIA REPTILE		 Arcadia
	PRODUCT DATA SHEET		
CPSMIN8	PURESUN-MINI		 

MEASUREMENTS (based on supplied lamps)

	Nominal wattage	Power usage	Energy rating	Kelvin	UVA	UVB	Lumens	Lumens per watt
	W	kWh /1000h	A	K	%	%	lm	lm/W
CPSMIN8	8	6.6	A	5800	12	2.40	280	42.42

COLOUR SPECTRAL CHART wavelength nm



	ARCADIA REPTILE	
	PRODUCT DATA SHEET	
CPSMIN8	PURESUN-MINI	 

COLOUR RENDER INDEX CHART

TEST EQUIPMENT

Power drawn	Everfine HAAS 1200 array spectroradiometer
Lumen output	Everfine HAAS 1200 array spectroradiometer
Colour temperature	Everfine HAAS 1200 array spectroradiometer
Lux	Iso-Tech Light Meter model 1335
PAR	Apogee PAR meter model MQ-500
UVA	Solarmeter UV Index model 6.5
UVB	Solarmeter UV Index model 6.5
UVC	Solarmeter UVC meter model 8.0
Energy eff. Calcs	EU reg 874/2012 Energy labelling of electrical lamps and luminaires

ADDITIONAL PARTS

HARMONISED STANDARDS

LVD	RoHS
EN60598-1:2015	EN50581:2012
EN62471:2008	
EN62493:2010	
EMC	
EN55015:2013	
EN61547:2009	
EN61000-3-2:2014	
EN61000-3-3:2013	